

Pompe submersibile BEST 2-5  
50 Hz

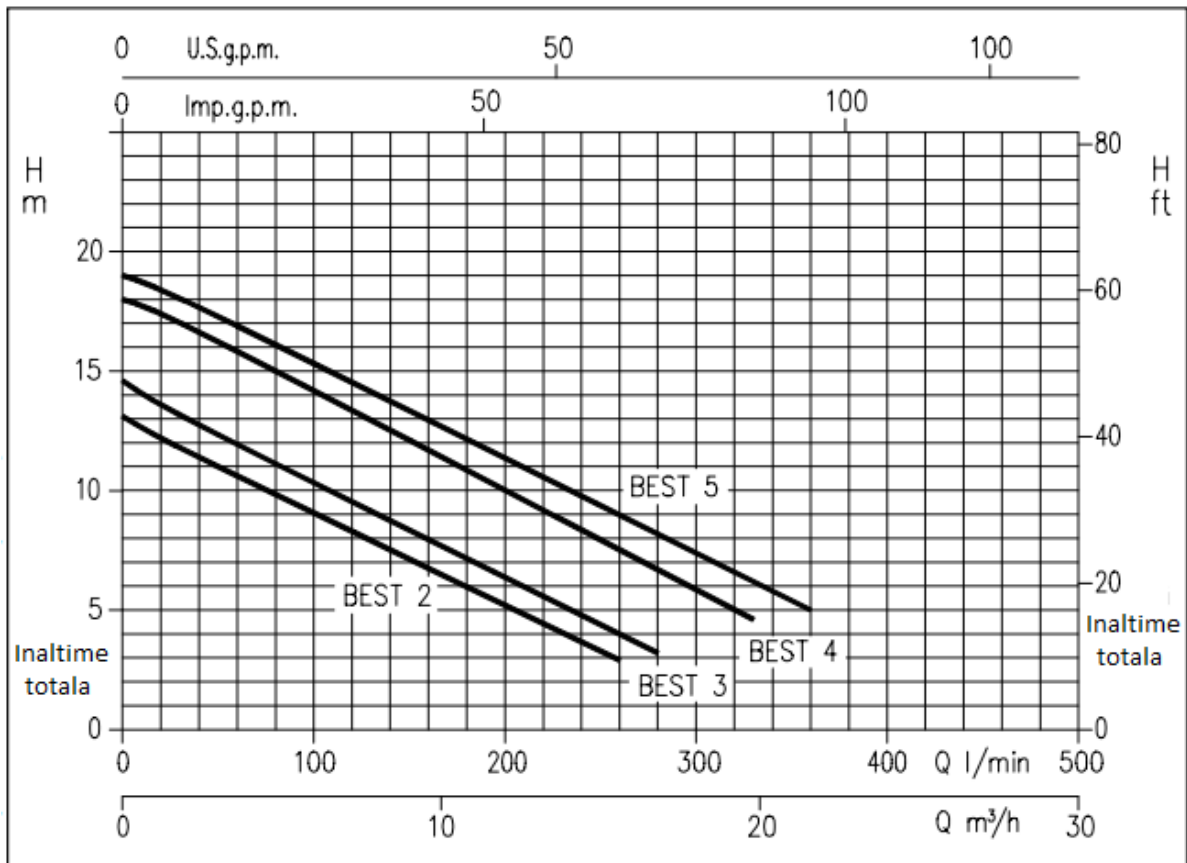
Cuprins	Pagina
- SPECIFICATII	200
GAMA DE PERFORMANTA si GRAFICUL DE SELECTIE	201
TIP CHEIE	202
SPECIFICATII CURBA	202
CURBA DE PERFORMANTA BEST 2	203
CURBA DE PERFORMANTA BEST 3	204
CURBA DE PERFORMANTA BEST 4	205
CURBA DE PERFORMANTA BEST 5	206
- CONSTRUCTII	300
VEDERE SECTIUNE	300
ETANSARI MECANICE	301
RULMENTI	301
- DIMENSIUNI SI GREUTATE	400
POMPA	400
GARNITURI	401
- DATE TEHNICE	500
- INSTALARE	600

## SPECIFICATII

POMPA		
Manipulare lichid	Tip lichid	Apa curata/uzata
	Temperatura maxima [°C]	35
	Dimensiune maxima solide [mm]	10 (particule in suspensie)
Imersare maxima [m]		7
Constructie	Rotor	Tip deschis centrifugal
	Tip etansare ax	Etansare dubla mecanica
	Rulment	Rulment cu bile etansat
Conexiuni teava	Flansa-Aspiratie	Filtru
	Flansa-Refulare [inch]	G 1½ UNI ISO 228
Material	Carcasa	AISI 304
	Rotor	AISI 304
	Capac carcasa	AISI 304
	Etansare ax	Partea pompei: SiC/SiC/NBR
		Partea motorului: Carbon/Ceramica/NBR
	Capac de etansare	AISI 304
	Ax	AISI 304 (extensie umed)
Lichid lubrifiant	Ulei mineral alb ESSO MARCOL 172 (180 cc)	
Test standard		ISO 9906:2012 – Grad 3B

<b>MOTOR</b>			
Tip		Tip uscat submersibil	
		Monofazat	Trifazat
Numar poli		2	
Viteza de rotatie	[min <sup>-1</sup> ]	≈2800	
Clasa de izolare		F	
Grad de protectie		IP 68	
Evaluare putere	[kW]	0.55 ÷ 1.1	0.55 ÷ 1.5
	[HP]	0.75 ÷ 1.5	0.575 ÷ 2
Frecventa	[Hz]	50	
Voltaj	[V]	230 ± 10%	400 ± 10%
Condensator		Incorporat	-
Protectie la suprasarcina		Incorporat	-
Flotor		Optional	-
Cablul Flotor	Material Dimensiune	H07RN-F	-
		3G1	-
Material carcasa		AISI 304	
Material baza/suport motor		AISI 304	
Cablul de alimentare	Lungime [m]	10	
	Material	H07RN-F	
	Dimensiune	3G1 (Best 2) 3G1.5 (Best 3,4)	4G1
Dimensiune de intrare a cablului		Presetupa	

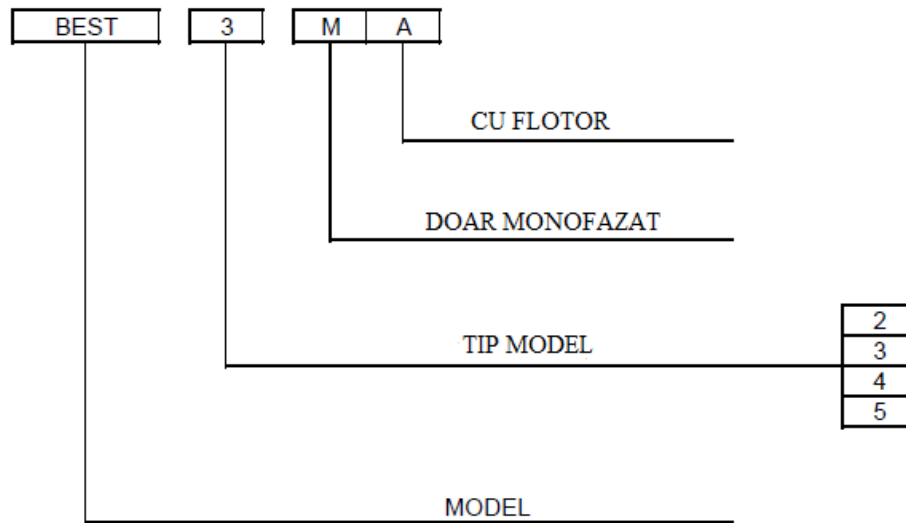
## CURBA DE PERFORMANTA



## DIAGRAMA SELECTIE

Pump type	Power		Q=Capacity													
	[kW]	[HP]	l/min m³/h	0	20	40	80	120	160	170	200	260	280	300	330	360
BEST 2	0.55	0.75	13.1	12.2	11.4	9.8	8.3	6.7	6.3	5	2.9	-	-	-	-	-
BEST 3	0.75	1	14.6	13.6	12.7	11.1	9.5	7.9	7.6	6.4	4	3.2	-	-	-	-
BEST 4	1.1	1.5	18	17.4	16.6	15	13.4	11.7	11.3	10	7.5	6.7	5.9	4.6	-	-
BEST 5	1.5	2	19	18.4	17.7	16.1	14.5	12.8	12.5	11.4	9	8	7.4	6	5	-

## TIP CRITERIU



## SPECIFICATII CURBA DE PERFORMANTA

Specificatiile de mai jos califica curbele prezentate in paginile urmatoare.

Toleranta in concordanta cu ISO 9906:2012 – Grad 3B.

Curbele se refera la viteza efectiva a motoarelor asincrone la 50 Hz, 2 poli.

Au fost facute masuratori cu apa curata la temperaturi de 20 °C si cu viscozitate cinematica de  $\nu = 1 \text{ mm}^2/\text{s}$  (1 cSt).

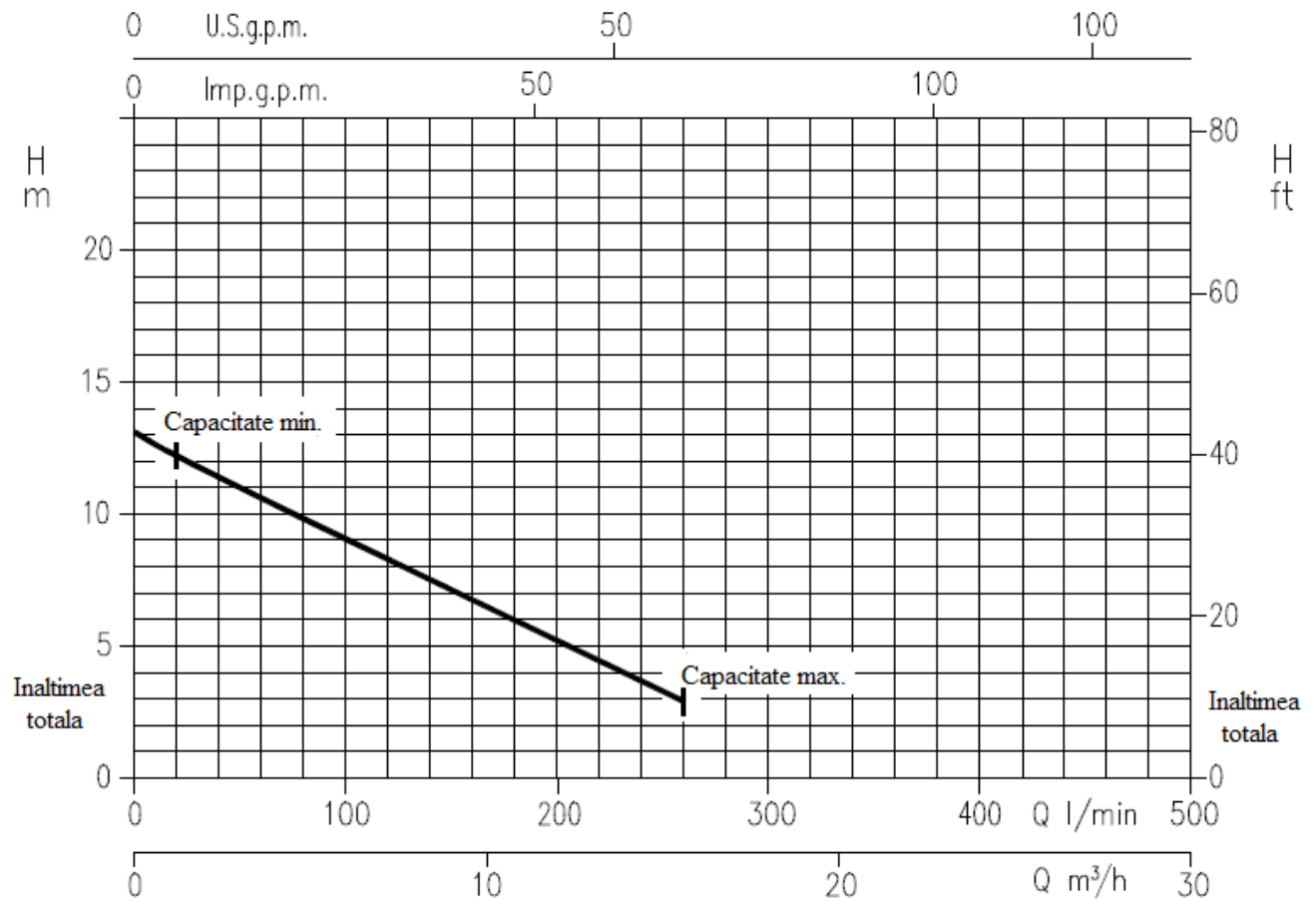
Pentru a evita riscul de supraincalzire, pompa nu trebuie sa fie utilizata la un debit sub 10% din punctul de eficienta cel mai bun.

Explicatii simboluri:

Q = Debit de volum

H = Inaltimea totala

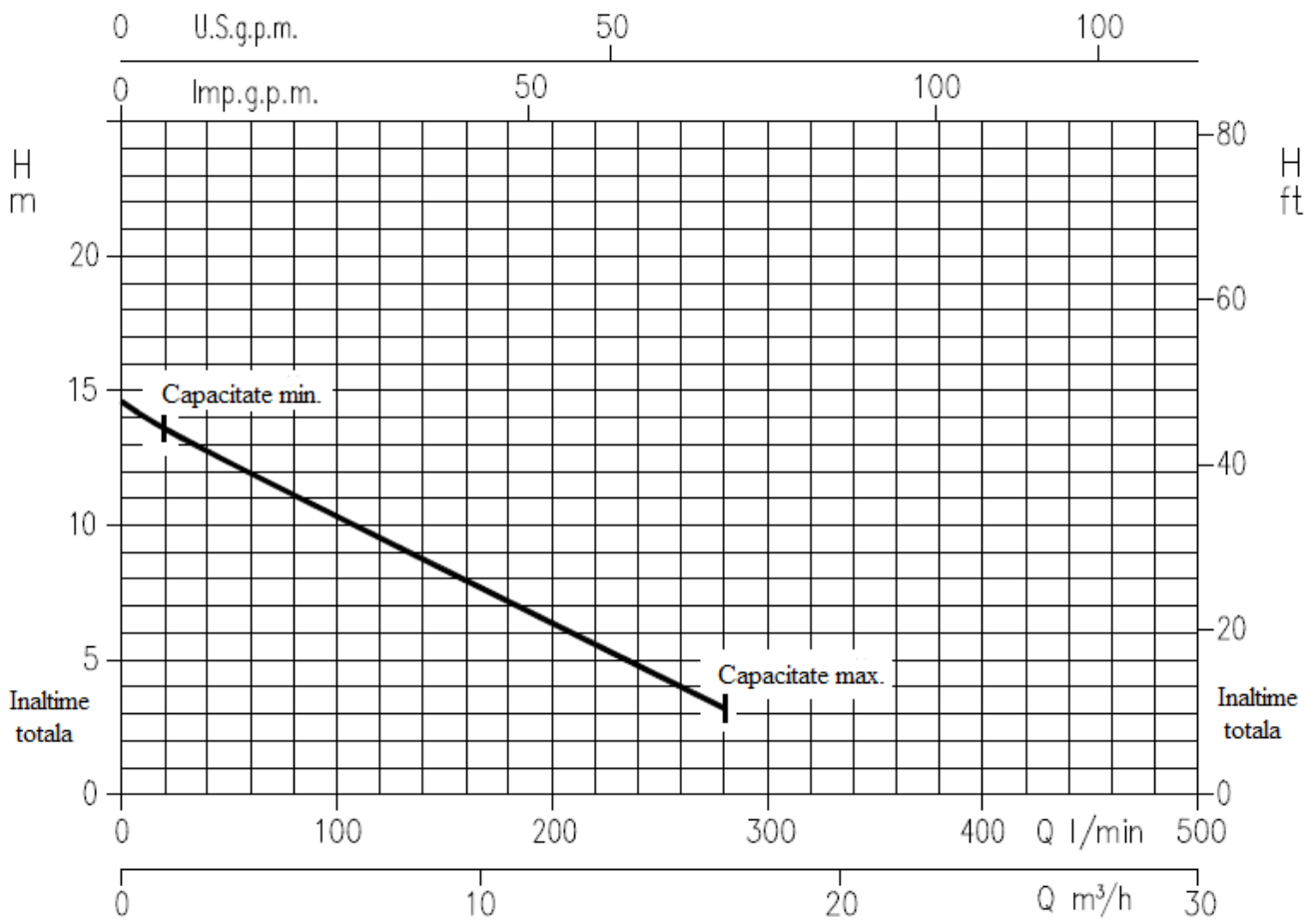
**BEST 2 (0.55 kW) – diametru rotor = 112 mm**



Viteza de rotatie ≈ 28 min<sup>-1</sup>

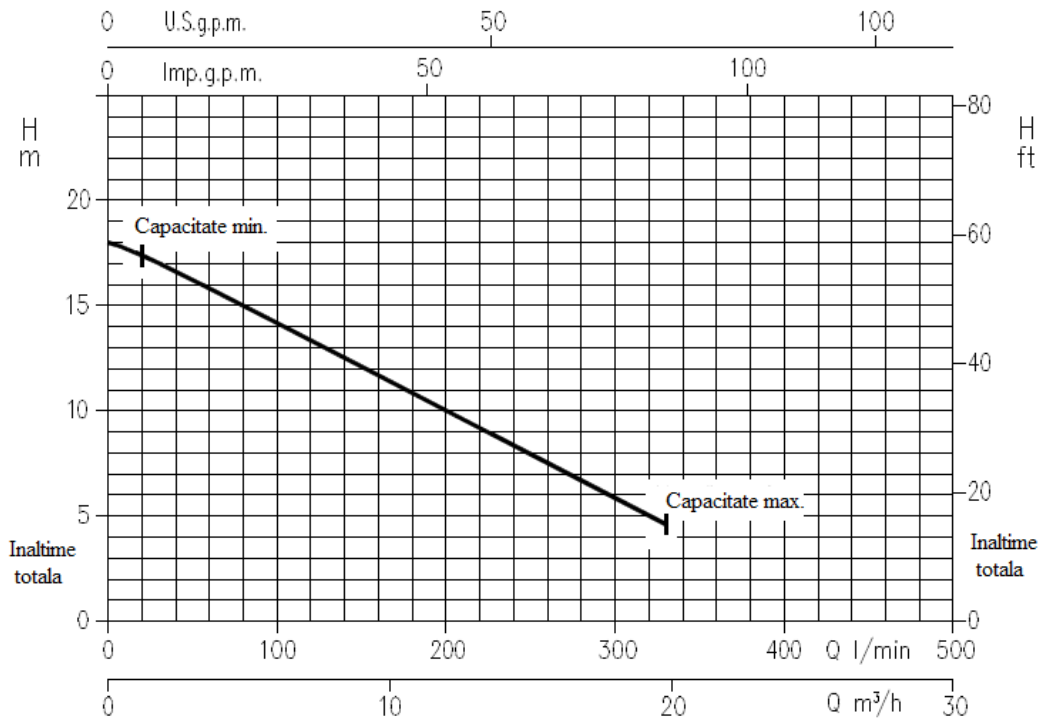
Test standard: ISO 9906:2012 – Grad 3B

**BEST 3 (0.75 kW) – diametru rotor = 120 mm**



Viteza de rotatie ≈ 2800 min<sup>-1</sup>  
Test standard: ISO 9906:2012 – Grad 3B

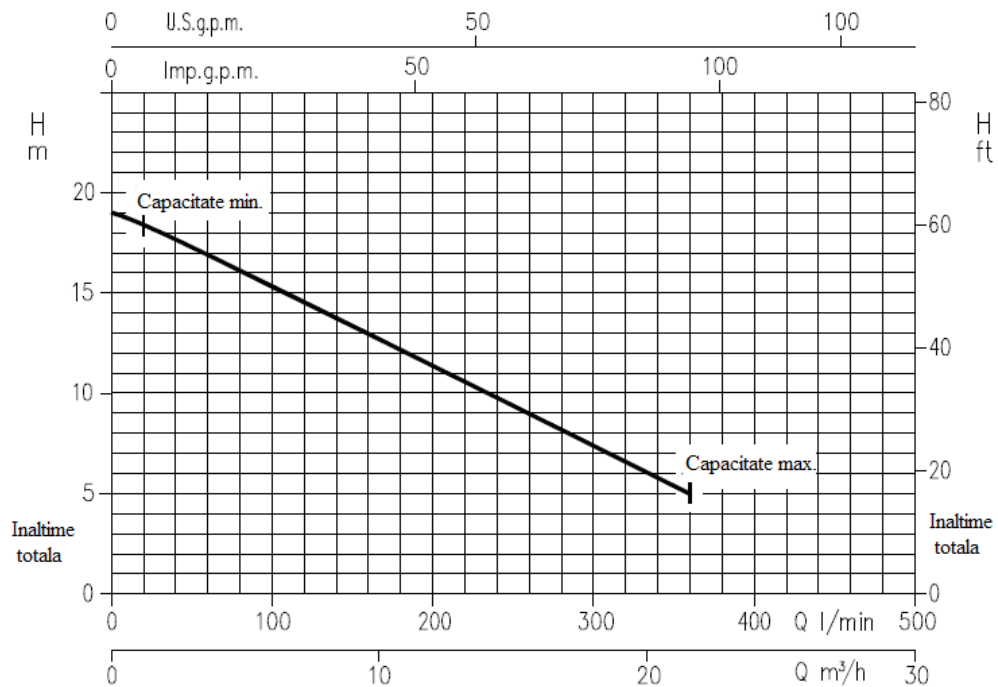
**BEST 4 (1.1 kW) – diametru rotor = 125 mm**



Viteza de rotatie  $\approx 2800 \text{ min}^{-1}$

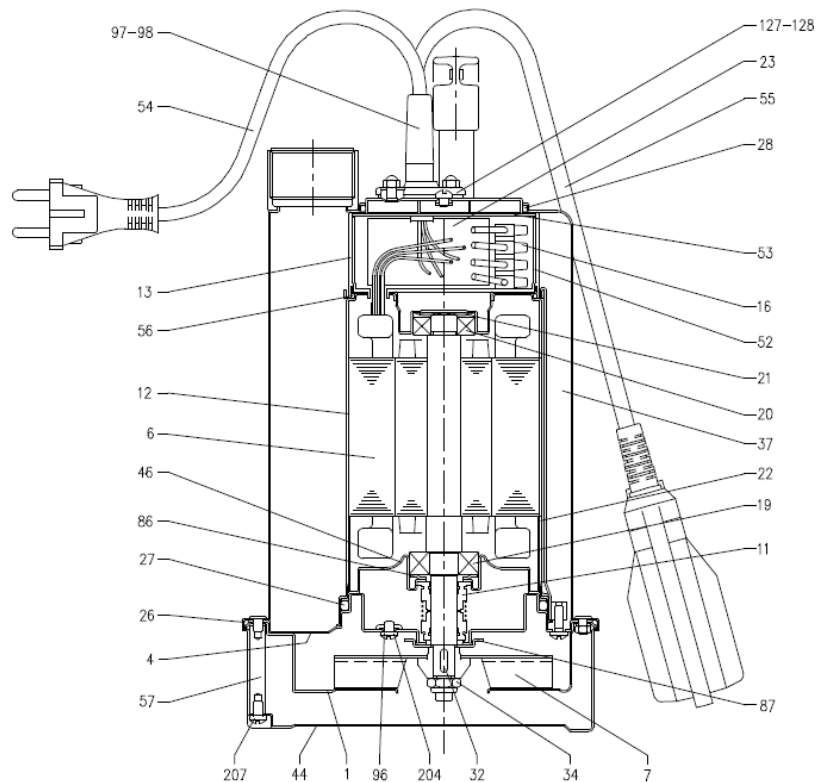
Test standard: ISO 9906:2012 – Grad 3B

**BEST 5 (1.5 kW) – diametru rotor = 125 mm**





## VEDERE SECTIUNE



N°	NUME SUBANSAMBLU	MATERIAL	Cant.
1	Voluta	AISI 304	1
4	Suport motor	AISI 304	1
6	Ax cu rotor	AISI 303	1
7	Rotor	AISI 304	1
11	Etansare mecanica [4]	NBR	2
12	Cadru motor cu stator	-	1
13	Carcasa motor	AISI 304	1
16	Borna	-	1
19	Rulment cu bile - partea pompei	-	1
20	Rulment cu bile - parte ventilator	-	1
21	Inel de reglare	Otel C70	1
22	Tirant	AISI 304	3
23	Condensator [2]	-	1
26	"O" Ring	NBR	1
27	"O" Ring	NBR	1
28	"O" Ring	NBR	1
32	Cheie	AISI 304	1
34	Paleta rotor	AISI 304	1

N°	NUME SUBANSAMBLU	MATERIAL	Cant.
37	Carcasa pompei	AISI 304	1
44	Filtru	AISI 304	1
46	Carcasa rulmenti	AISI 304	1
52	Cutie de izolatie borne	PA66 armata cu fibra de sticla clasa V-0	1
53	Invelis de izolatie borne	PA66 class V-0	1
54	Cablu de alimentare	-	1
55	Flotor [1]	-	1
56	"O" Ring	NBR	1
57	Bolt	AISI 303	3
86	Saiba	AISI 304	1
87	Inel rotor	AISI 304	1
96	"O" Ring	NBR	3
97	Conector cablu [1]	NBR	1
98	Conector cablu	NBR	1
127	Conector cablu [1]	AISI 304	1
128	Conector cablu	AISI 304	1
204	Surub	Otel inoxidabil A2 UNI 7323	3
207	Surub	Otel inoxidabil A2 UNI 7323	3

[1] – Doar pentru versiunea monofazat cu flotor

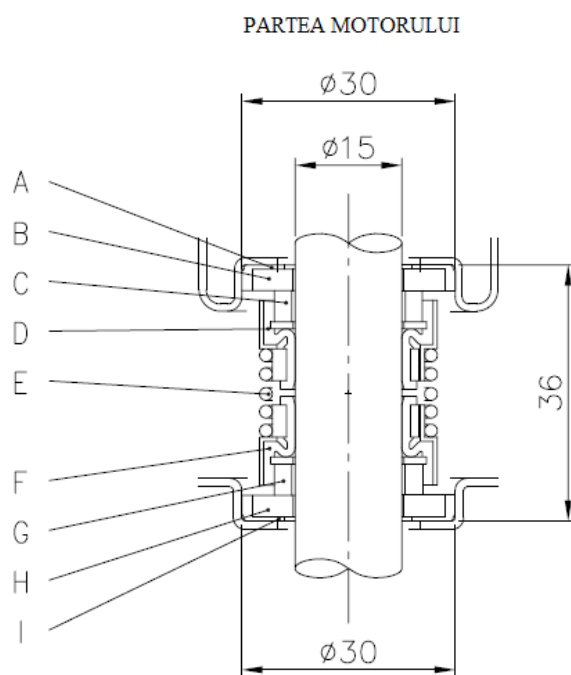
[2] – Doar pentru versiunea monofazat

[3] – Vezi dimensiunile etansarii mecanice la pagina 301

## RULMENTI

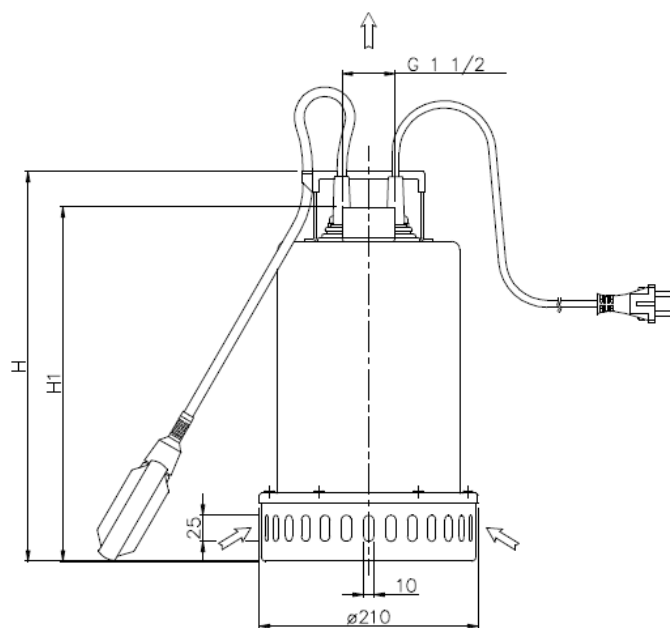
Tip pompe		Rulmenti cu bile	
Monofazat	Trifazat	Partea pompei	Partea ventilatorului
BEST 2M	BEST 2M	6203 ZZ	6202 ZZ
BEST 3M	BEST 3M	6203 ZZ	6202 ZZ
BEST 4M	BEST 4M	6203 ZZ	6202 ZZ
-	BEST 5M	6203 ZZ	6202 ZZ

## ETANSARE MECANICA



REF	NUME SUBANSAMBLU	MATERIAL
A	Ventuza cauciuc	NBR
B	Reazem	Ceramica
C	Etansare	Carbon
D	Burduf	NBR
E	Arc	AISI 304
F	Burduf	NBR
G	Etansare	Carbura de siliciu
H	Reazem	Carbuna de siliciu
I	Ventuza de cauciuc	NBR

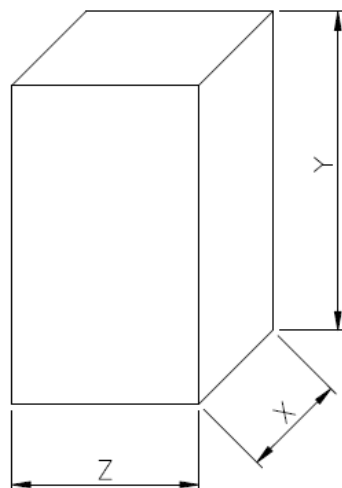
## DIMENSIUNI SI GREUTATE



**POMPA**

Tip pompa	Dimensiuni [mm]	
	H	H1
BEST 2	352	315
BEST 3	352	315
BEST 4	377	340
BEST 5	377	340

## IMPACHETARE



Tip pompe		Ambalare [mm]			Greutate pompe cu ambalare [kg]	Greutate pompe fara ambalare [kg]
Monofazat	Trifazat	X	Y	Z		
BEST 2M	BEST 2	240	375	250	12,5	12
BEST 3M	BEST 3	240	375	250	13,2	12,7
BEST 4M	BEST 4	240	400	250	14,3	13,8
-	BEST 5	240	400	250	14	13,5

## DATE MOTOR

Tip pompe		Putere		Condensat or monofazat		Admisie [kW]		Curent de incarcare complet [A]		Curent rotor blocat [A]	
Monofazat	Trifazat	[kW]	[HP]	[F]	[Vc]	Monofazat	Trifazat	Monofazat	Trifazat	Monofazat	Trifazat
BEST 2M	BEST 2	0.55	0.75	16	450	0.9	1.0	4.4	2.0	16	10
BEST 3M	BEST 3	0.75	1	20	450	1.3	1.2	5.6	2.4	20	12.5
BEST 4M	BEST 4	1.1	1.5	30	450	1.7	1.6	7.3	3.0	25	16.5
-	BEST 5	1.5	2	-	-	-	1.7	-	3.3	-	16.5

## INSTALARE

